

iLocalizer

by CAD Software Solutions (Switzerland)

User Guide

iLocalizer is a useful tool to localize Inventor Drawing Documents. Any Text information on Sheets, Leader Notes, Custom Tables and Parts Lists can easily be translated from one language into another.

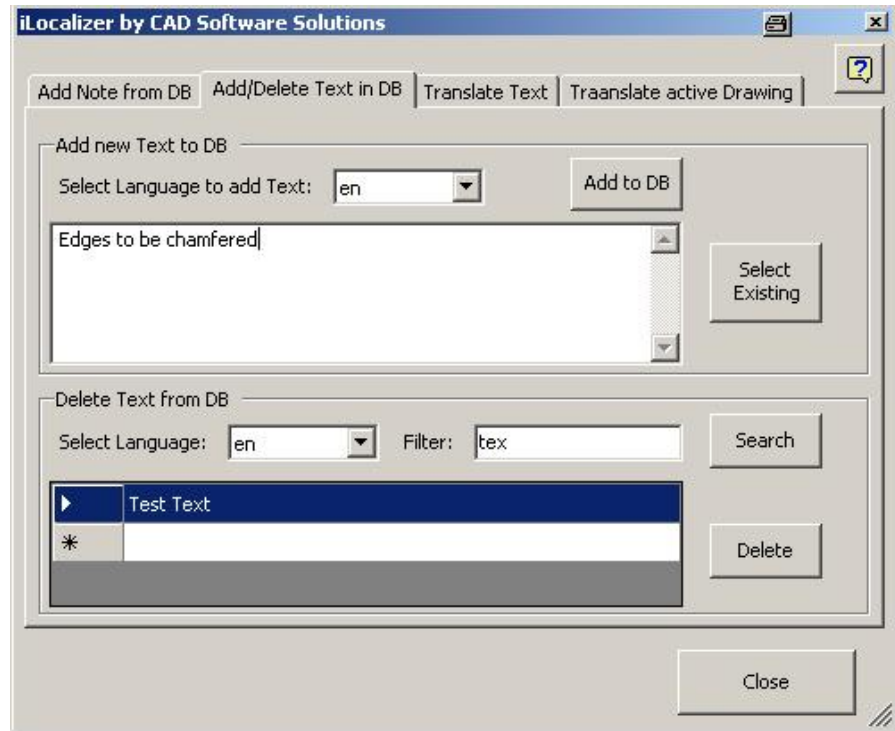
iLocalizer also supports the designer in reuse of existing Text information from the Database to add to the Drawing or to edit existing items on Drawings. The re-use of existing information helps to reduce time for Drawing creation and saves money for translation work.

iLocalizer is based on a SQL Express Database (no need to install a SQL Server instance) and supports 32- and 64-Bit OS.

iLocalizer runs a Demo Version with a limit of 10 Database entries.

How to Start using iLocalizer

After installation the first step to do is to add content to the Database. Open a Inventor Drawing Document and run the iLocalizer AddIn. Select the 'Add/Delete Text in DB' tab.



Adding entry to Database:

- select the source language (the language of the Text to add to the DB)
- type the Text for the DB entry in the upper (white) textfield) – optionally press the 'Select Existing' Button and select a Text from your Drawing
- press the 'Add to DB' Button

The Text is now added to the DB in selected language

Deleting entry from Database:

- select the language of Text you're looking for in the lower area of the GUI
- without any Filter option all DB entries will appear - optionally use the full text search to reduce the numbers of results
- select one DB entry and press the 'Delete' Button

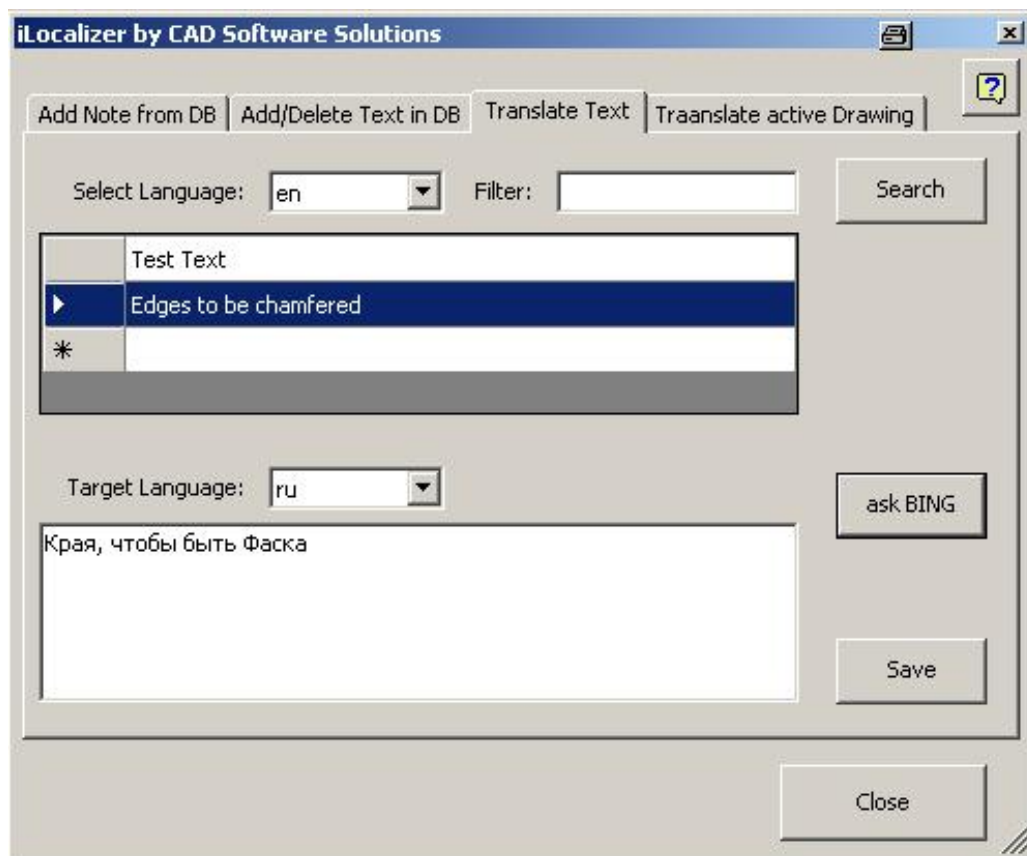
The DB entry is now deleted from the DB - including ALL of it's translations to other languages (if translations have been made)

How to translate DB entries into another language ?

Open a Inventor Drawing Document and start the iLocalizer AddIn. Select the 'Translate Text' tab. Select the source language and the grid will show all DB entries for this language (Note: empty entries in the grid means that there are DB entries in another language which are not translated to the SELECTED language).

Optionally you can use the Filter option to reduce the results.

Select one entry in the grid. Select the target language – this is the language you want the DB entry translate to. Type the translation in the lower text field or optionally press the 'ask BING' Button to receive a translation from the free BING translation service (Please note: BING does not support all languages in the same quality, so check the results seriously).

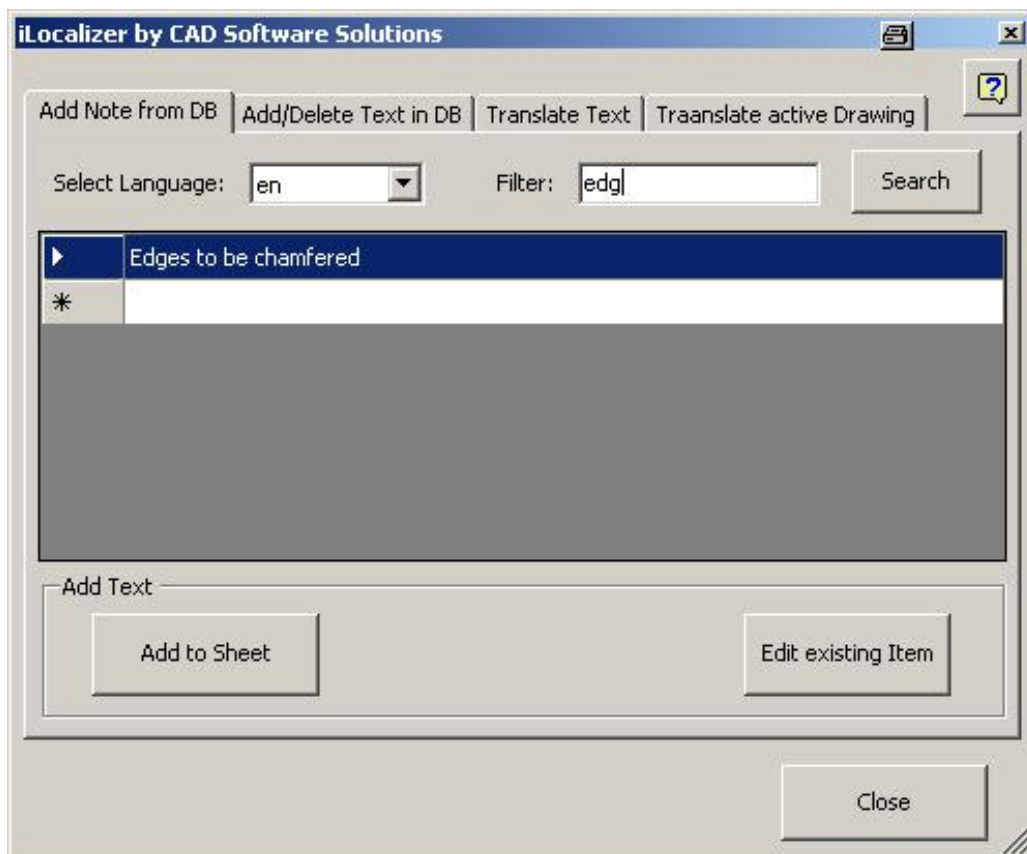


If the translation fits your expectations press the 'Save' Button to save the translation to the DB.

How to use iLocalizer as a CAD Designer ?

iLocalizer supports the re-use of existing DB entries through the CAD Designer to save time and costs during the creation and localization of Drawings. Open a Inventor Drawing Document and start the iLocalizer AddIn. Select the 'Add Notes from DB' tab. Select the language in which you want to add Text information to your Drawing. Optionally use the full text search to reduce the numbers of results. Select the needed Text in the grid and press the 'add to Sheet' button – the Text information will appear in the left lower corner of your drawing. Move the Text field to the needed location on your Drawing.

Instead of adding Text to a Drawing as described before the user can edit existing Text and LeaderNotes. Instead of using the 'Add to Sheet' Button use the 'Edit existing Item' Button. Select than a Text or LeaderNote from your Drawing to edit it's text.



How to translate a Drawing ?

Open a Inventor Drawing Document and start the iLocalizer AddIn. Select the 'Translate active Drawing' tab. Select the Drawings source language (the language the drawings text information is in now). Than select the target language (in which language you want the Drawing translate to). Select the desired options which Elements you want to translate: Text/LeaderNotes, Custom Tables, Parts List. Please note: the option 'Parts List' translates the Parts List Headers and one Column. You must enter the columns name which has to be translated.

To start the translation of the active Drawing Sheet press the 'Translate Drawing' Button. iLocalizer will now translate all in the selected source language found Text information to the selected target language. Note: if no translation is found for a desired text in the DB iLocalizer just ignores this Text and the original Text will stay.

